

MODEL: iR6800C

No.: iRC6800-011

(ECNC002)

Date: 30.07.04

**LOCATION: BLACK DEVELOPING ASSEMBLY**

**SUBJECT: TONER LEAKAGE**

**Reason:** There is a gap of 0.5 to 1.0 mm on the seal affixed onto the pipe-jointing area. Because of this, a continuous copy/print run of a large number of high density images, will increase the toner pressure inside the pipe, consequently allowing toner to leak from around the gap on the seal.

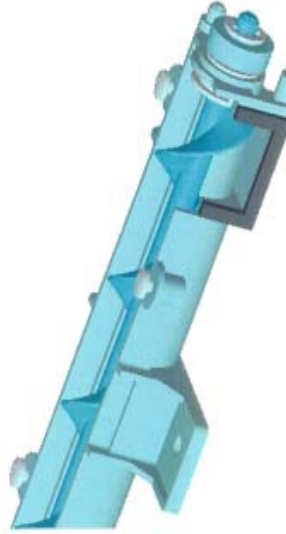
**Detail:** Attach new seal.

**Service Parts:**

There is a limited amount of free of charge stock available for this item. You can order the free of charge item by emailing [Robert.gilhooly@canon-europe.com](mailto:Robert.gilhooly@canon-europe.com). Parts will only be supplied against serial numbers. When the stock is exhausted, you will then need to place your order through the normal channel.

Description		Part number	Q'ty		Inter-changeability	P.C. -----
Old	NPN		1 - 0		NY	-----
New	FC5-1721-000		0 - 1			-----

# Black toner leakage

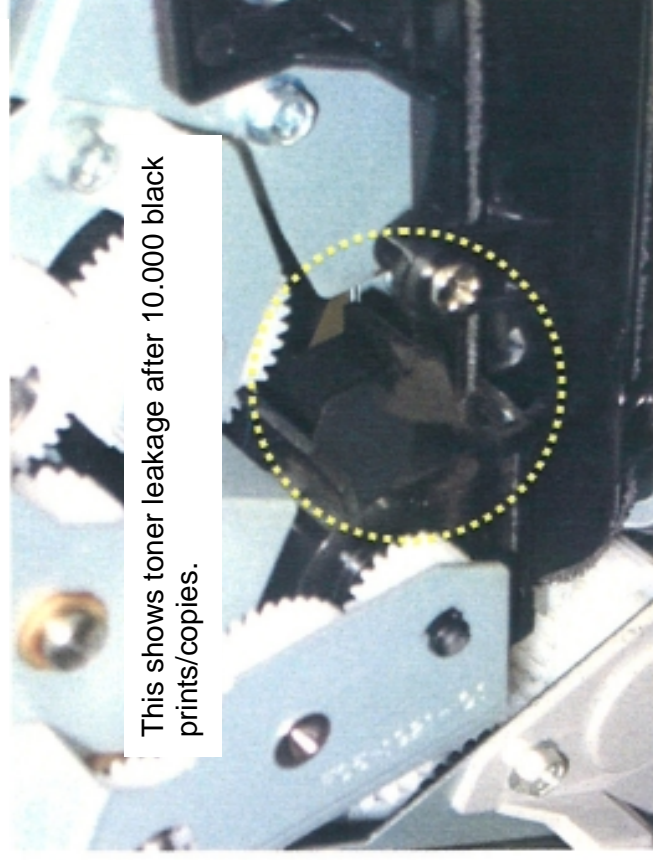
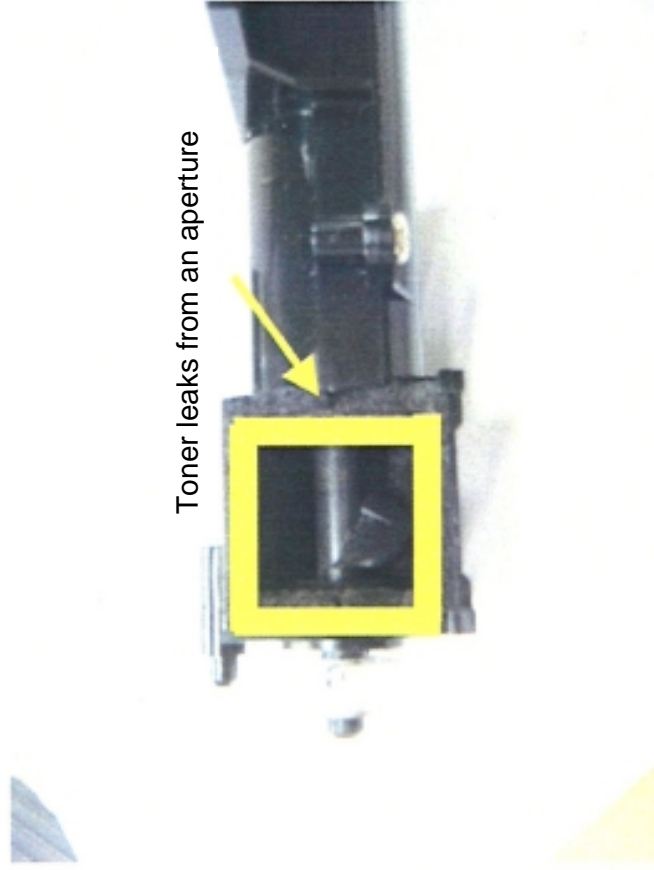


IMG\_2057.JPG

# Black toner leakage(The cause)

## Cause:

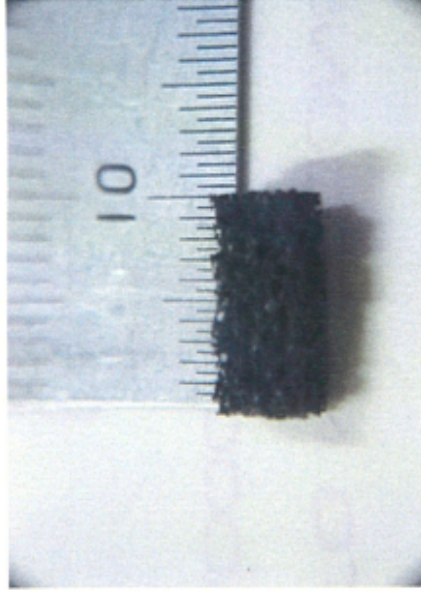
There is an aperture (0.1-0.5) at pipe joint section. In case you take copies with dark image (e.g. thick density) in succession, toner pressure inside the pipe is getting higher, black toner leaks from aperture of "material". However, this problem does not happen in some machines, because it is sealed differently.



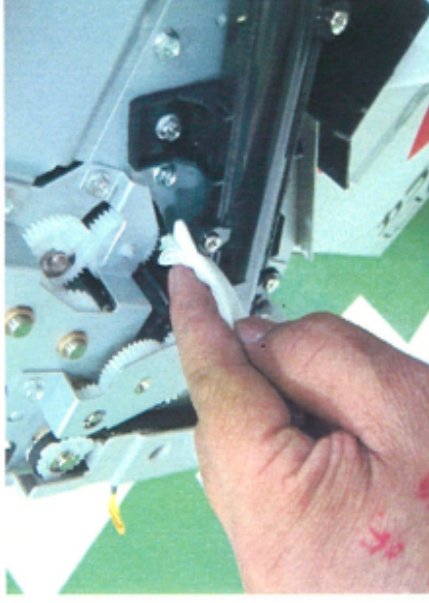
# Black toner leakage(Measure)

## Measures

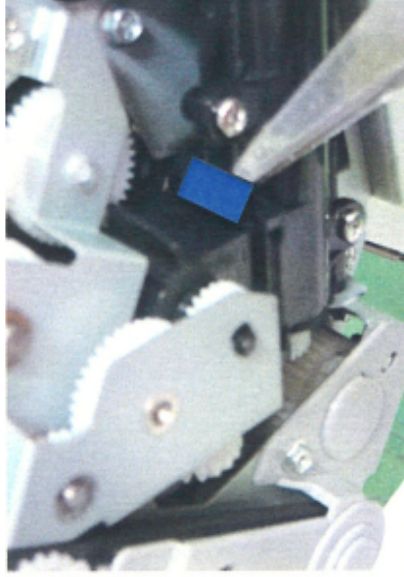
① Cut material to 10mm



② Wipe surface of joint with alcohol



③ Paste material to fit the groove



Attention: Pasting should be to the left wall

④ Press material with your finger

